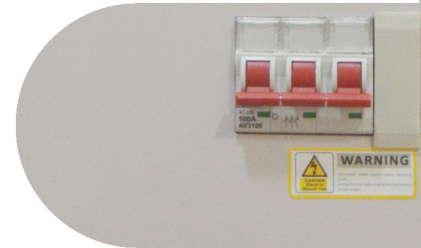
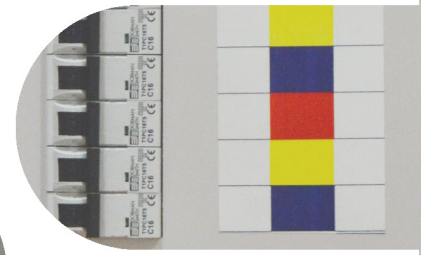
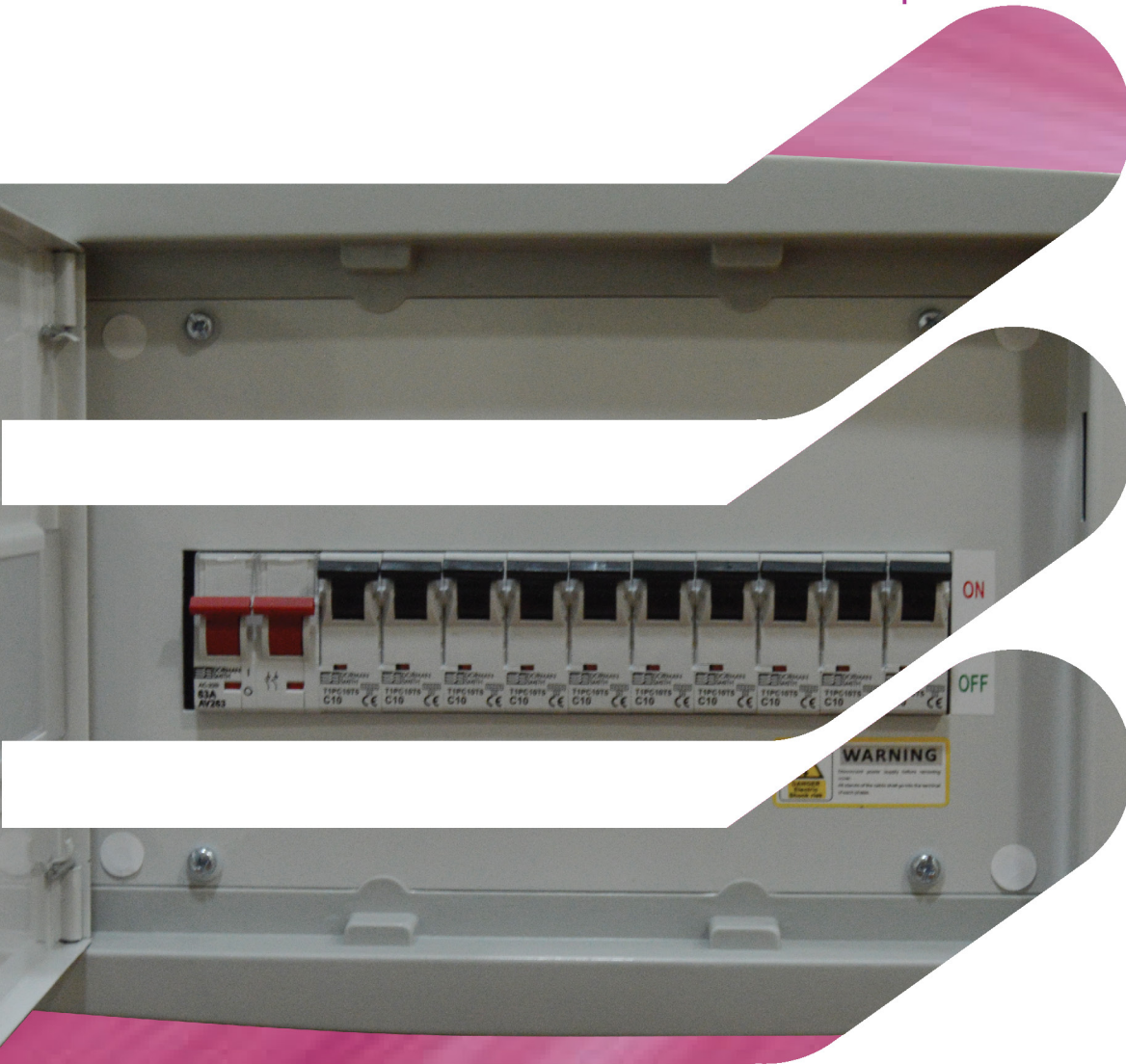


# Loadcentre Elegance

DBs for Residential & Commercial Purpose





# Dorman Smith Switchgear Limited

With over 130 years of experience in switchgear design and production Dorman Smith Switchgear Limited continues to provide high quality equipment for low-voltage electrical distribution and circuit protection.

Our product range begins with single-pole and neutral distribution board systems and continues up to custom designed, factory built low-voltage electrical switchboards for a broad range of commercial, industrial and retrofit applications.

We continue to build on our extensive technical knowledge and awareness of customer and market demands, operating conditions and current regulations.

This breadth of experience supports the development and manufacturing techniques of our electrical products to exceed the industry standards.



## Index

Content	Page No
Elegance Series - Loadcentre SP&N Distribution Systems	2
Elegance Series - Loadcentre Row Type Distribution Systems	7
Elegance Series - Loadcentre TP&N Distribution Systems	13

# Elegance Series

## Loadcentre SP&N Distribution Systems

### Key Features

The Dorman Smith Loadcentre distribution system includes a versatile range of MCB distribution boards and components for constructing comprehensive SP&N circuit management solutions. The system is designed for applications demanding up to 100A incoming and 63A outgoing capacity and the distribution board conforms to EN 61439-3 requirements.

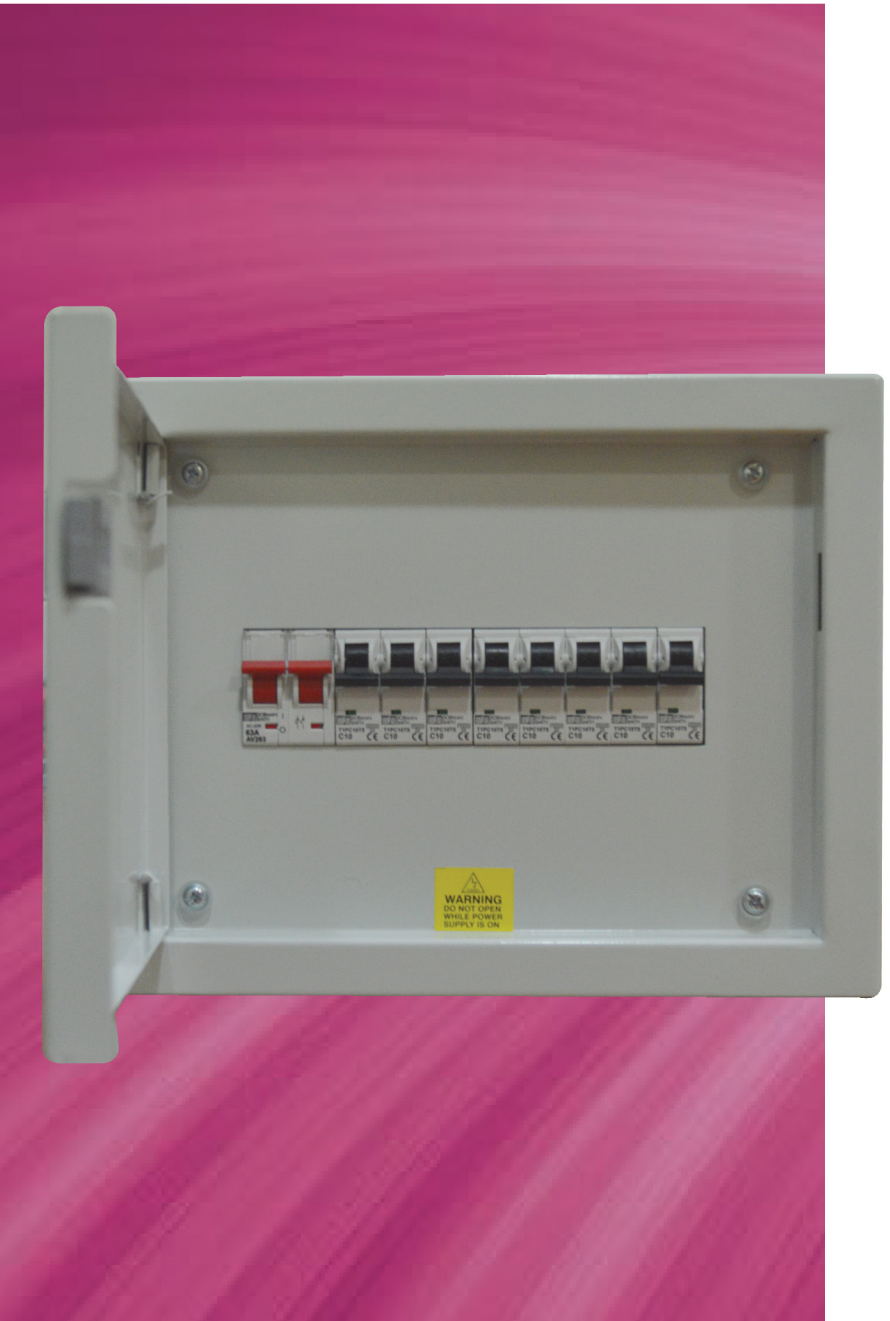
The array of circuit devices includes an extensive range of MCBs, RCBOs, RCCBs and switch disconnectors. The system ensures simple configuration and quick installation as demanded by today's new and retrofit, commercial and industrial applications.

#### Material Specification

- Enclosure is formed from 1.0mm sheet steel and 1.2mm door
- Distribution board has 100A rated, tin-plated busbars
- Busbars are formed from hard drawn, high conductivity copper, grade C101 ETP
- Paint finish is 50-75 microns epoxy powder coating in light grey RAL 7035 gloss
- Sliding spring loaded latch for ease of opening
- Spacious enclosure size for the ease of wiring and fitment

#### Available Options

- Distribution boards can be stacked
- Choice of switch disconnector or RCCB incomer
- Distribution boards provide from 4 to 16 outgoing ways
- Incomer can be double-pole switch disconnector up to 100A or doublepole RCCB up to 100A
- Outgoing ways can be configured with 6kA or 10kA-rated MCBs or RCBOs



#### Additional Features

- Raised Neutral (10mm<sup>2</sup>) and Earth Terminals for easy termination
- Adjustable Painted Din rail mounting Assembly
- Available with and without transparent Polycarbonate Window
- Flush and surface versions available

#### Compliance

Distribution Boards	EN 61439-3
MCBs	EN 60898
Contactors	EN 61095
RCBOs	EN 61009
RCCBs	EN 61008

## Loadcentre SP&N Distribution Systems

- Range : 4, 6, 8, 12 & 16 Way
- Specifications : IEC 61439-3
- Color : RAL 7035 (Power Coated Glossy Surface)
- Mounting : Flush and Surface Versions
- Incomer : Up to 100A DP Isolator or RCCB

### Flush Mounting Enclosures

No. of Ways	I/C+O/G	Steel Door Ref.	Transparent Window Ref.
4	4	DBDCE04F	DBTCE04F
6	6	DBDCE06F	DBTCE06F
8	8	DBDCE08F	DBTCE08F
12	12	DBDCE12F	DBTCE12F
16	16	DBDCE16F	DBTCE16F
4	2+4	DB2DCE04F	DB2TCE04F
6	2+6	DB2DCE06F	DB2TCE06F
8	2+8	DB2DCE08F	DB2TCE08F
12	2+12	DB2DCE12F	DB2TCE12F
16	2+16	DB2DCE16F	DB2TCE16F

For Surface Type, Replace "F" with "S"

For Flat Lip, Replace "F" with "FL"



### Flush Type RCBO Outgoing

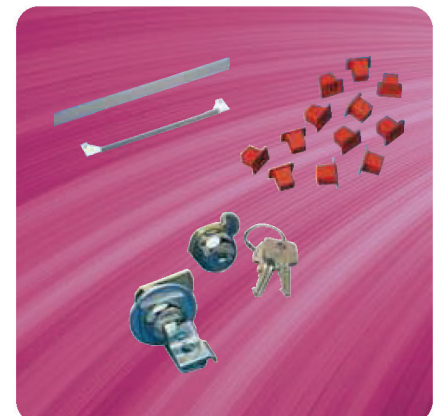
No. of Ways	I/C + O/G	RCBO Type Ref.
4	2+4	DBDCE04FR
8	2+8	DBDCE08FR
9	2+9	DBDCE09FR
10	2+10	DBDCE10FR
12	2+12	DBDCE12FR
16	2+16	DBDCE16FR

For Surface Type, Replace "F" with "S"

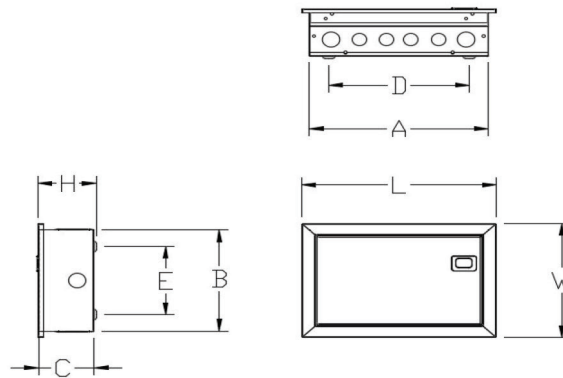
For Flat Lip, Replace "F" with "FL"

### Accessories for all SP&N Distribution Boards

Description	Cat. no.
<b>Blanking pieces</b>	
Busbar terminal blanks (x10)	DAXTP
<b>Door lock kits</b>	
Cylinder door lock	DBXCL
Padlock bracket kit	DBXPL



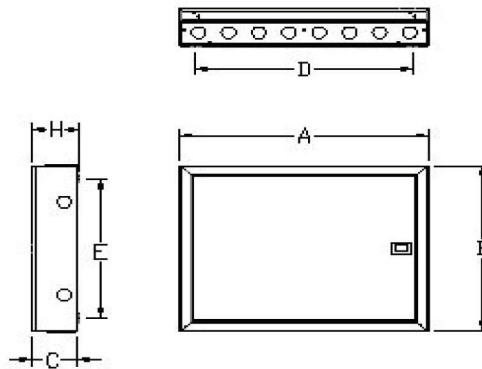
## SP&N Distribution Boards Dimensions



### FLUSH TYPE

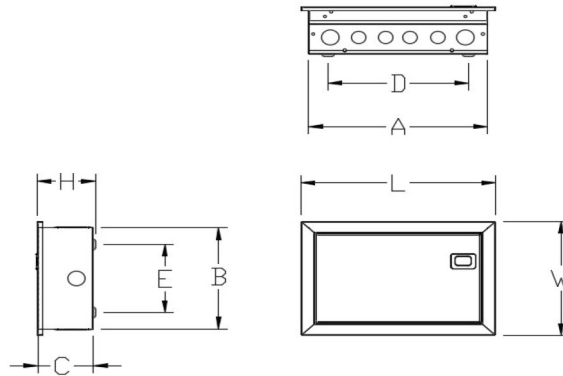
TYPE	SPN BOX WITHOUT DOOR			SPN BOX WITH DOOR					TOP		BOTTOM		SIDE (LH+RH)		THICKNESS in 'MM' BOX, TRAY, DOOR & SIDE PLATE
	A	B	C	L	W	H	D	E	Ø26	Ø31	Ø26	Ø31	Ø26	Ø31	
2+4-WAY	216.0	215.0	96.0	240.0	239.0	101.0	86.00	145.00	3		3		0	1+1	1
2+6-WAY	252.0	215.0	96.0	276.0	239.0	101.0	122.00	145.00	2	2	2	2	0	1+1	1
2+8-WAY	288.0	215.0	96.0	312.0	239.0	101.0	158.00	145.00	2	2	2	2	0	1+1	1
2+12-WAY	360.0	215.0	96.0	384.0	239.0	101.0	230.00	145.00	4	2	4	2	0	1+1	1
2+16-WAY	432.0	215.0	96.0	456.0	239.0	101.0	302.00	145.00	4	2	4	2	0	1+2	1

## SP&N Distribution Boards Dimensions

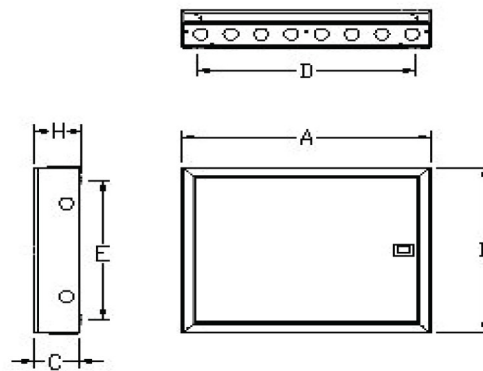


TYPE	SURFACE TYPE												THICKNESS in 'MM'
	SPN BOX WITHOUT DOOR			SPN BOX WITH DOOR			TOP		BOTTOM		SIDE (LH+RH)		
	A	B	C	H	D	E	Ø26	Ø31	Ø26	Ø31	Ø26	Ø31	
2+4-WAY	216.0	215.0	96.0	101 .0	86.0	145 .0	3		3		0	1+1	1
2+6-WAY	252.0	215.0	96.0	101 .0	122 .0	145 .0	2	2	2	2	0	1+1	1
2+8-WAY	288.0	215.0	96.0	101 .0	158 .0	145 .0	2	2	2	2	0	1+1	1
2+12-WAY	360.0	215.0	96.0	101 .0	230.0	145 .0	4	2	4	2	0	1+1	1
2+16-WAY	432.0	215.0	96.0	101 .0	302.0	145 .0	4	2	4	2	0	1+2	1

# SP&N Distribution RCBO Outgoing Boards Dimensions



SURFACE TYPE RCBO OUTGOING															
TYPE	SPN BOX WITHOUT DOOR			SPN BOX WITH DOOR					TOP			BOTTOM			THICKNESS in 'MM' BOX, TRAY, DOOR & SIDEPLATE
	A	B	C	L	W	H	D	E	φ26	φ20	φ50	φ26	φ20	φ50	
2+4	234	240	90	234	240	95	170	173	2	2	1	2	2	1	1
2+8	306	240	90	306	240	95	242	173	4	3	1	4	3	1	1
2+9	324	240	90	324	240	95	260	173	4	4	1	4	4	1	1
2+10	342	240	90	342	240	95	278	173	4	4	1	4	4	1	1
2+12	378	240	90	378	240	95	314	173	5	5	1	5	5	1	1
2+16	450	240	90	450	240	95	386	173	7	6	1	7	6	1	1



FLUSH TYPE RCBO OUTGOING															
TYPE	SPN BOX WITHOUT DOOR			SPN BOX WITH DOOR					TOP			BOTTOM			THICKNESS in 'MM' BOX, TRAY, DOOR & SIDEPLATE
	A	B	C	L	W	H	D	E	φ26	φ20	φ50	φ26	φ20	φ50	
2+4	234	240	90	254	260	95	170	173	2	2	1	2	2	1	1
2+8	306	240	90	326	260	95	242	173	4	3	1	4	3	1	1
2+9	324	240	90	344	260	95	260	173	4	4	1	4	4	1	1
2+10	342	240	90	362	260	95	278	173	4	4	1	4	4	1	1
2+12	378	240	90	398	260	95	314	173	5	5	1	5	5	1	1
2+16	450	240	90	470	260	95	386	173	7	6	1	7	6	1	1



# Elegance Series

## Loadcentre Row Type Distribution Systems

### Key Features

Included within the Dorman Smith Loadcentre range of distribution systems is a family of horizontal or 'row type' enclosures that provide a versatile choice of MCB circuit management solutions. The system caters for applications requiring up to 125A incoming and 63A outgoing capacity. Both surface mounting and flush mounting versions are available. The distribution boards conform to EN 61439-3 requirements.

The selection of circuit devices includes MCBs, RCBOs, RCCBs, and switch disconnectors. Single-pole and triple-pole devices can be used together within the same board.

#### Material Specification

- Enclosure is formed from 1.0mm sheet steel and 1.2mm door
- Paint finish is 50-75 microns epoxy powder coating in light grey RAL 7035 gloss  
Sliding spring loaded latch for ease of opening
- Spacious enclosure size for the ease of wiring and fitment

#### Available Options

- Surface mounted distribution board
- Flush mounted distribution board
- Choice of switch disconnector or RCCB incomer
- Distribution boards provide from 1 to 6 horizontal rows
- Total single module capacity per row is 16 outgoing ways
- 24 outgoing ways on request
- Incomer can be switch disconnector up to 125A, RCCB up to 100A
- Outgoing ways can be configured with 6kA or 10kA-rated MCBs, or RCBOs
- Outgoing ways can also be single or triple pole



#### Additional Features

- Raised Neutral (10mm<sup>2</sup>) and Earth Terminals for easy termination
- Adjustable Painted Din rail mounting Assembly
- Available with and without transparent Polycarbonate Window

#### Compliance

Distribution Boards	EN 61439-3
MCBs	EN 60898
RCBOs	EN 61009
RCCBs	EN 61008

## Row Type Distribution Systems

- Range : 10, 12, 14, 16, 18 and 24 Module in 1-6 row Configuration
- Specifications : IEC 61439-3
- Color : RAL 7035 (Power Coated Glossy Surface)
- Mounting : Flush and Surface Versions
- Incomer : up to 125A DP / TP Isolator or RCCB

## Flush Mounting Enclosures

No of Row	Modules	I/C + O/G	Steel Door	Transparent Window
1	10	10	DBRE1X10F	DBRE1X10TF
2	10	20	DBRE2X10F	DBRE2X10TF
3	10	30	DBRE3X10F	DBRE3X10TF
4	10	40	DBRE4X10F	DBRE4X10TF
5	10	50	DBRE5X10F	DBRE5X10TF
6	10	60	DBRE6X10F	DBRE6X10TF
1	12	12	DBRE1X12F	DBRE1X12TF
2	12	24	DBRE2X12F	DBRE2X12TF
3	12	36	DBRE3X12F	DBRE3X12TF
4	12	48	DBRE4X12F	DBRE4X12TF
5	12	60	DBRE5X12F	DBRE5X12TF
6	12	72	DBRE6X12F	DBRE6X12TF
1	16	16	DBRE1X16F	DBRE1X16TF
2	16	32	DBRE2X16F	DBRE2X16TF
3	16	48	DBRE3X16F	DBRE3X16TF
4	16	64	DBRE4X16F	DBRE4X16TF
5	16	80	DBRE5X16F	DBRE5X16TF
6	16	96	DBRE6X16F	DBRE6X16TF
1	18	18	DBRE1X18F	DBRE1X18TF
2	18	36	DBRE2X18F	DBRE2X18TF
3	18	54	DBRE3X18F	DBRE3X18TF
4	18	72	DBRE4X18F	DBRE4X18TF
5	18	90	DBRE5X18F	DBRE5X18TF
6	18	108	DBRE6X18F	DBRE6X18TF
2	24	48	DBRE2X24F	DBRE2X24TF
3	24	72	DBRE3X24F	DBRE3X24TF
4	24	96	DBRE4X24F	DBRE4X24TF
5	24	120	DBRE5X24F	DBRE5X24TF
6	24	144	DBRE6X24F	DBRE6X24TF

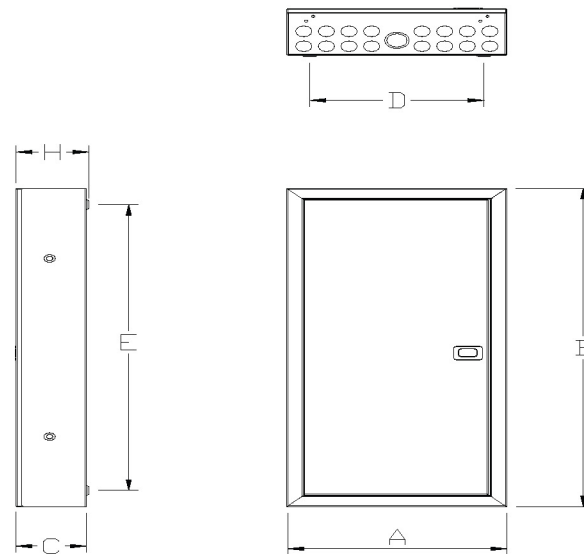
For Surface Mounting Enclosures, replace F with S  
For Flat Lip, Replace "F" with "FL"

## Accessories for all Row type Distribution Boards

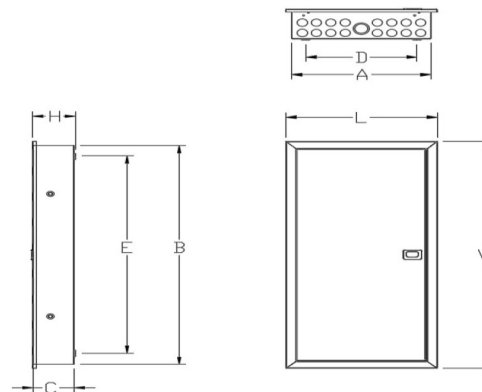
Description	Cat. no.
<b>Blanking pieces</b>	
Busbar terminal blanks (x10)	DAXTP
<b>Door lock kits</b>	
Cylinder door lock	DBXCL
Padlock bracket kit	DBXPL



## Dimensions 10 Way Row DB

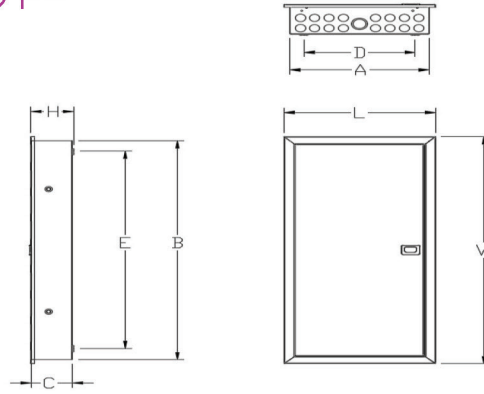


Type	SIZE AS PER DRAWING										SURFACE TYPE				Thickness in MM	
	A	B	C	D	E	L	W	H	D	E	TOP	TOP	BOTTOM	BOTTOM	BOX & SIDE PLATE	TRAY & DOOR
											φ26	φ38/φ25	φ26	φ31		
1 ROW 10 WAY	335	295	100	225	225	335	295	105	225	225	12	1	12	1	1	1.2
2 ROW 10 WAY	335	445	100	225	375	335	445	105	225	375	12	1	12	1	1	1.2
3 ROW 10 WAY	335	595	100	225	525	335	595	105	225	525	12	1	12	1	1	1.2
4 ROW 10 WAY	335	745	103	225	675	335	745	108	225	675	12	1	12	1	1	1.2
5 ROW 10 WAY	335	895	103	225	825	335	895	108	225	825	12	1	12	1	1	1.2
6 ROW 10 WAY	335	1045	100	225	975	335	1045	108	225	975	12	1	12	1	1	1.2



Type	SIZE AS PER DRAWING										FLUSH TYPE				Thickness in MM	
	A	B	C	D	E	L	W	H	D	E	TOP	TOP	BOTTOM	BOTTOM	BOX & SIDE PLATE	TRAY & DOOR
											φ26	φ38/φ25	φ26	φ31		
1 ROW 10 WAY	335	295	100	225	225	335	315	105	225	225	12	1	12	1	1	1.2
2 ROW 10 WAY	335	445	100	225	375	335	465	105	225	375	12	1	12	1	1	1.2
3 ROW 10 WAY	335	595	100	225	525	335	615	105	225	525	12	1	12	1	1	1.2
4 ROW 10 WAY	335	745	103	225	675	335	769	108	225	675	12	1	12	1	1	1.2
5 ROW 10 WAY	335	895	103	225	825	335	915	108	225	825	12	1	12	1	1	1.2
6 ROW 10 WAY	335	1045	103	225	975	335	1065	108	225	975	12	1	12	1	1	1.2

## Dimensions Flush Type



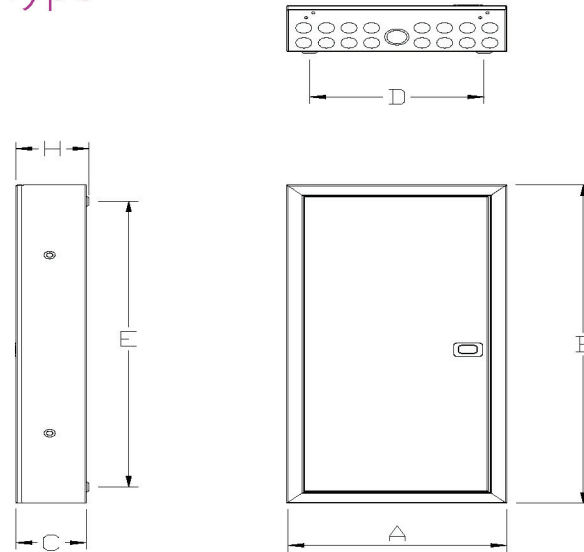
12 WAY ROW DB ADJUSTABLE - Flush Type													
TYPE	BOX WITHOUT DOOR			BOX WITH DOOR					TOP		BOTTOM		THICKNESS in 'MM'
	A	B	C	L	W	H	D	E	Ø26	Ø31	Ø26	Ø31	BOX, DOOR & TRAY
1-ROW	370.0	295.0	10.0.0	388.0	313.0	10.5.0	240.0	225.0	12	1	12	1	1/1.2
2-ROW	370.0	445.0	10.0.0	388.0	463.0	10.5.0	240.0	375.0	12	1	12	1	1/1.2
3-ROW	370.0	595.0	10.0.0	388.0	613.0	10.5.0	240.0	525.0	12	1	12	1	1/1.2
4-ROW	370.0	745.0	10.0.0	388.0	763.0	10.5.0	240.0	675.0	12	1	12	1	1/1.2
5-ROW	370.0	895.0	10.0.0	388.0	913.0	10.5.0	240.0	825.0	12	1	12	1	1/1.2
6-ROW	370.0	1045.0	10.0.0	388.0	1063.0	10.5.0	240.0	975.0	12	1	12	1	1/1.2

18 WAY ROW DB ADJUSTABLE - Flush Type														
TYPE	BOX WITHOUT DOOR			BOX WITH DOOR					TOP			BOTTOM		THICKNESS in 'MM'
	A	B	C	L	W	H	D	E	Ø26	Ø31	Ø38	Ø26	Ø31	BOX, DOOR & TRAY
1-ROW	430.0	295.0	10.0.0	488.0	313.0	10.5.0	300.0	225.0	16	2	1	16	1	1/1.2
2-ROW	430.0	445.0	10.0.0	488.0	463.0	10.5.0	300.0	375.0	16	2	1	16	1	1/1.2
3-ROW	430.0	595.0	10.0.0	488.0	613.0	10.5.0	300.0	525.0	16	2	1	16	1	1/1.2
4-ROW	430.0	745.0	10.0.0	488.0	763.0	10.5.0	300.0	675.0	16	2	1	16	1	1/1.2
5-ROW	430.0	895.0	10.0.0	488.0	913.0	10.5.0	300.0	825.0	16	2	1	16	1	1/1.2
6-ROW	430.0	1045.0	10.0.0	488.0	1063.0	10.5.0	300.0	975.0	16	2	1	16	1	1/1.2

24 WAY ROW DB ADJUSTABLE - Flush Type															
TYPE	BOX WITHOUT DOOR			BOX WITH DOOR					TOP			BOTTOM		THICKNESS in 'MM'	
	A	B	C	L	W	H	D	E	Ø26	Ø31	Ø38	Ø26	Ø31	Ø38	BOX, DOOR & TRAY
2-ROW	624.0	445.0	10.0.0	642.0	463.0	10.5.0	554.0	375.0	24	2	1	24	2	1	1.2
3-ROW	624.0	595.0	10.0.0	642.0	613.0	10.5.0	554.0	525.0	24	2	1	24	2	1	1.2
4-ROW	624.0	745.0	10.0.0	642.0	763.0	10.5.0	554.0	675.0	24	2	1	24	2	1	1.2
5-ROW	624.0	895.0	10.0.0	642.0	913.0	10.5.0	554.0	825.0	24	2	1	24	2	1	1.2
6-ROW	624.0	1045.0	10.0.0	642.0	1063.0	10.5.0	554.0	975.0	24	2	1	24	2	1	1.2

\* Product Improvement is a continuous process, change in Dimensions/ Designs can be implemented without prior notifications

## Dimensions Surface Type

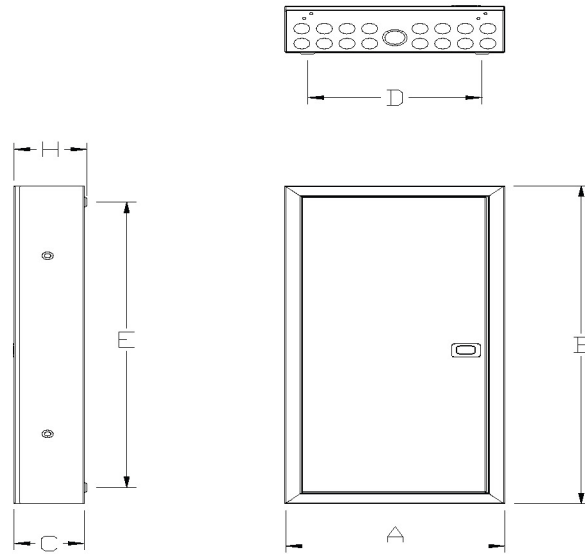


1 2WAY ROW DB ADJUSTABLE - Surface Type											
TYPE	BOX WITHOUT DOOR			BOX WITH DOOR			TOP		BOTTOM		THICKNESS in 'MM' BOX, DOOR & TRAY
	A	B	C	H	D	E	Ø26	Ø38	Ø26	Ø38	
2-ROW	370.0	445.0	10.0.0	10 5.0	240.0	375.0	12	1	12	1	1/1.2
3-ROW	370.0	595.0	10.0.0	10 5.0	240.0	525.0	12	1	12	1	1/1.2
4-ROW	370.0	745.0	10.0.0	10 5.0	240.0	675.0	12	1	12	1	1/1.2
5-ROW	370.0	895.0	10.0.0	10 5.0	240.0	825.0	12	1	12	1	1/1.2
6-ROW	370.0	104 5.0	10.0.0	10 5.0	240.0	975.0	12	1	12	1	1/1.2

16WAY ROW DB ADJUSTABLE - Surface Type												
TYPE	BOX WITHOUT DOOR			BOX WITH DOOR			TOP			BOTTOM		THICKNESS in 'MM' BOX, DOOR & TRAY
	A	B	C	H	D	E	Ø26	Ø31	Ø38	Ø26	Ø38	
2-ROW	430.0	445.0	10.0.0	10 5.0	300.0	375.0	16	2	1	16	1	1/1.2
3-ROW	430.0	595.0	10.0.0	10 5.0	300.0	525.0	16	2	1	16	1	1/1.2
4-ROW	430.0	745.0	10.0.0	10 5.0	300.0	675.0	16	2	1	16	1	1/1.2
5-ROW	430.0	895.0	10.0.0	10 5.0	300.0	825.0	16	2	1	16	1	1/1.2
6-ROW	430.0	104 5.0	10.0.0	10 5.0	300.0	975.0	16	2	1	16	1	1/1.2

\* Product Improvement is a continuous process, change in Dimensions/ Designs can be implemented without prior notifications

## Dimensions Surface Type



24 WAY ROW DB ADJUSTABLE - Surface Type														
TYPE	BOX WITHOUT DOOR						TOP			BOTTOM			THICKNESS in 'MM'	
	A	B	C	H	D	E	φ26	φ31	φ38	φ26	φ31	φ38	BOX & SIDE PLATE	DOOR & TRAY
2 - ROW	624	445	106	111	514	375	24	2	1	24	2	1	1	1.2
3 - ROW	624	595	106	111	514	525	24	2	1	24	2	1	1	1.2
4 - ROW	624	745	106	111	514	675	24	2	1	24	2	1	1	1.2
5 - ROW	624	895	106	111	514	825	24	2	1	24	2	1	1	1.2
6 - ROW	624	1045	106	111	514	975	24	2	1	24	2	1	1	1.2

\* Product Improvement is a continuous process, change in Dimensions/ Designs can be implemented without prior notifications

# Elegance Series

## Loadcentre TP&N Distribution Systems

### Key Features

The Dorman Smith Loadcentre distribution board system promotes build simplicity and versatility of final circuit management solutions up to 250A with its comprehensive range of MCB distribution boards and components for commercial and industrial TP&N applications. The distribution boards conform to EN 61439-2,3. Both surface mounted and flush-mounted versions are available.

The array of circuit devices includes an extensive range of RCCBs, MCBs, RCBOs and MCCBs. The system ensures simple configuration and quick assembly for new and retrofit installations.

#### Material Specification

- Enclosure is formed from 1.0mm sheet steel and 1.2mm door
- Busbars are formed from hard drawn, high conductivity copper, grade C101 ETP
- Busbars are tin plated
- Paint finish is 50-75 microns epoxy powder coating in light grey RAL 7035
- Sliding spring loaded latch for ease of opening
- Spacious enclosure size for the ease of wiring and fitment

#### Available Options

- Standard provision for 4 to 16 outgoing triple pole ways
- Boards have standard width (430mm) and depth (115mm)
- Incomer can be switch disconnecter, MCCB or RCCB
- Outgoing ways can be configured with 6kA or 10kA-rated MCBs, or RCBOs



#### Additional Features

- Raised Neutral (10mm<sup>2</sup>) and Earth Terminal for easy termination
- Adjustable Painted Din rail mounting Assembly to receive various terminal height MCBs
- Masking Sheet to safeguard against rusting during construction

#### Compliance

Distribution boards	EN 61439-3
MCBs	EN 60898
RCCBs	EN 61008
RCBOs	EN 61009

## Loadcentre B Type Vertical Boards

- Range : 4, 6, 8, 12 and 16 Way
- Specification : IEC 61439-3
- Color : RAL 7035 (Power Coated Glossy Surface)
- Incomer : 125A Isolator / RCCB or both (3/4 Poles)
- Incomer option for MCCB Incomer DB: 125A & 250A

## Flush Type - Standard DB

No of Ways	I/C + O/G*	MCB Outgoing DB	RCBO Outgoing DB
4	3+12	DBVD3E04F *	DBVD3E04FR
6	3+18	DBVD3E06F *	DBVD3E06FR
8	3+24	DBVD3E08F *	DBVD3E08FR
10	3+30	DBVD3E10F *	DBVD3E10FR
12	3+36	DBVD3E12F *	DBVD3E12FR
16	3+48	DBVD3E16F *	DBVD3E16FR
4	4+12	DBVD4E04F	DBVD4E04FR
6	4+18	DBVD4E06F	DBVD4E06FR
8	4+24	DBVD4E08F	DBVD4E08FR
10	4+30	DBVD4E10F	DBVD4E10FR
12	4+36	DBVD4E12F	DBVD4E12FR
16	4+48	DBVD4E16F	DBVD4E16FR
4	8+12	DBVD8E04F	-
6	8+18	DBVD8E06F	-
8	8+24	DBVD8E08F	-
10	8+30	DBVD8E10F	-
12	8+36	DBVD8E12F	-
16	8+48	DBVD8E16F	-

For Surface Type, Replace "F" with "S"  
 RCBO Type Outgoing, Replace "FR" with "SR" for Surface Type  
 For Flat Lip, Replace "F" with "FL"

\* 3125 - Suitable for 3 Pole 125A Isolator  
 3100 - Suitable for 3 Pole 100A Isolator  
 363 - Suitable for 3 Pole 63A Isolator



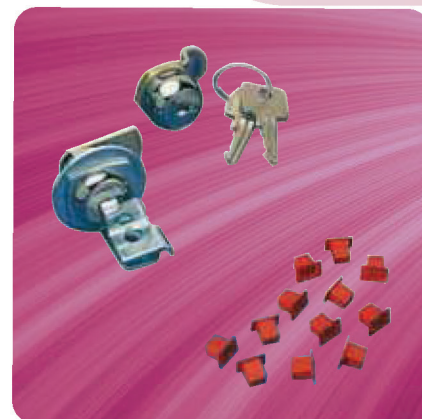
## Flush Type - MCCB Incomer DB

No of Ways	125A Incomer DB	250A Incomer DB
4	DBVD3E04F125	DBVD3E04F250
6	DBVD3E06F125	DBVD3E06F250
8	DBVD3E08F125	DBVD3E08F250
12	DBVD3E12F125	DBVD3E12F250
16	DBVD3E16F125	DBVD3E16F250

For Flat Lip, Replace "F" with "FL"

## Accessories for all TP&N Distribution Boards

Description	Cat. no.
<b>Blanking pieces</b>	
Busbar terminal blanks (x10)	DAXTP
MCB blanks (4x3 MCB ways + 12 busbar terminal blanks)	DBXBP
MCB blanks (5x1/2 MCB ways)	DBXBH
MCB blanks (5x1 MCB ways + 5 busbar terminal blanks)	DBXBM
<b>Door lock kits</b>	
Cylinder door lock	DBXCL
Padlock bracket kit	DBXPL

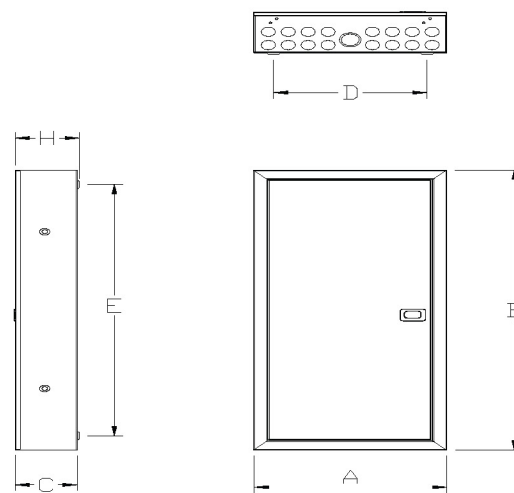




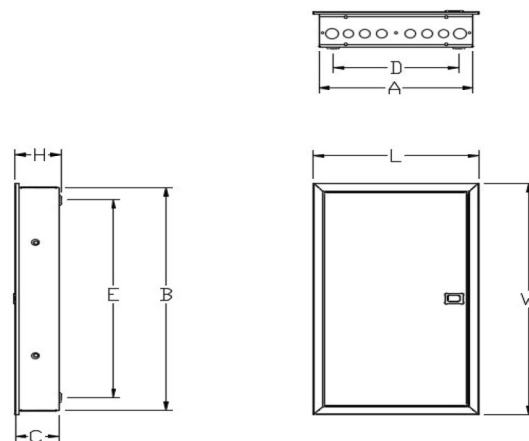
## Flush Type - Split DB

No. of Ways	I/C + O/G	Split DB
4	2+2	DBVD8E204F-22
6	2+4	DBVD8E206F-24
8	4+4	DBVD8E208F-44
8	2+6	DBVD8E208F-26
10	4+6	DBVD8E210F-46
12	6+6	DBVD8E212F-66
12	4+8	DBVD8E212F-48
16	8+8	DBVD8E216F-88
16	6+10	DBVD8E216F-610

## Dimensions - Vertical DB Adjustable - RCBOs Outgoing



Type	SURFACE TYPE													THICKNESS in 'MM'	
	BOX WITHOUT DOOR			BOX WITH DOOR					TOP					BOX & SIDE PLATE	Door & Tray
	A	B	C	L	W	H	D	E	φ26	φ31	φ26	φ31	φ31		
4 - WAY	430	450	105	430	450	110	320	380	6	3	6	3	2+2	1	1.2
6 - WAY	430	504	105	430	504	110	320	434	6	3	6	3	2+2	1	1.2
8 - WAY	430	558	105	430	558	110	320	488	6	3	6	3	2+2	1	1.2
12 - WAY	430	612	105	430	612	110	320	542	6	3	6	3	2+2	1	1.2
16 - WAY	430	666	105	430	666	110	320	596	6	3	6	3	2+2	1	1.2



\* For Surface Type, Replace "F" with "S"

FLUSH TYPE																
Type	BOX WITHOUT DOOR			BOX WITH DOOR					TOP					THICKNESS in 'MM'		
	A	B	C	L	W	H	D	E	φ26	φ31	φ26	φ31	φ31	BOX & SIDE PLATE	Door & Tray	
4 - WAY	430	450	105	450	470	110	320	380	6	3	6	3	2+2	1	1.2	
6 - WAY	430	504	105	450	524	110	320	434	6	3	6	3	2+2	1	1.2	
8 - WAY	430	558	105	450	578	110	320	488	6	3	6	3	2+2	1	1.2	
12 - WAY	430	612	105	450	632	110	320	542	6	3	6	3	2+2	1	1.2	
16 - WAY	430	666	105	450	666	110	320	596	6	3	6	3	2+2	1	1.2	

## Dimensions - Vertical DB Adjustable

Flush Type																	
	TPN BOX WITHOUT DOOR			TPN BOX WITH DOOR					TOP		BOTTOM		SIDE (LH+RH)		THICKNESS in 'MM'		
TYPE	A	B	C	L	W	H	D	E	Ø26	Ø31	Ø26	Ø31	Ø26	Ø31	BOX SIDE PLATE	DOOR & TRAY	
4-WAY	395.0	450.0	106.0	413.0	468.0	11.00	265.00	380.00	3	4	3	4	0	2+2	1	1	
6-WAY	395.0	504.0	106.0	413.0	522.0	11.00	265.00	434.00	3	6	3	6	0	2+2	1	1	
8-WAY	395.0	558.0	106.0	413.0	576.0	11.00	265.00	488.00	3	6	3	6	0	2+2	1	1	
12 -WAY	395.0	666.0	106.0	413.0	648.0	11.00	265.00	596.00	3	8	3	8	0	2+2	1	1	

SURFACE TYPE																
Type	BOX WITHOUT DOOR			BOX WITH DOOR					TOP		BOTTOM		SIDE(LH+RH)		THICKNESS in 'MM'	
	A	B	C	L	W	H	D	E	φ26	φ31	φ26	φ31	φ31	BOX & SIDE PLATE	DOOR & TRAY	
4 - WAY	395	450	105	395	450	110	285	380	6	2	6	2	2+2	1	1.2	
6 - WAY	395	504	105	395	504	110	285	434	6	2	6	2	2+2	1	1.2	
8 - WAY	395	558	105	395	558	110	285	488	6	2	6	2	2+2	1	1.2	
12 - WAY	395	612	105	395	612	110	285	542	6	2	6	2	2+2	1	1.2	
16 - WAY	395	666	105	395	666	110	285	596	6	2	6	2	2+2	1	1.2	

## Dimensions - Vertical DB Adjustable - 250A MCCB Incomer

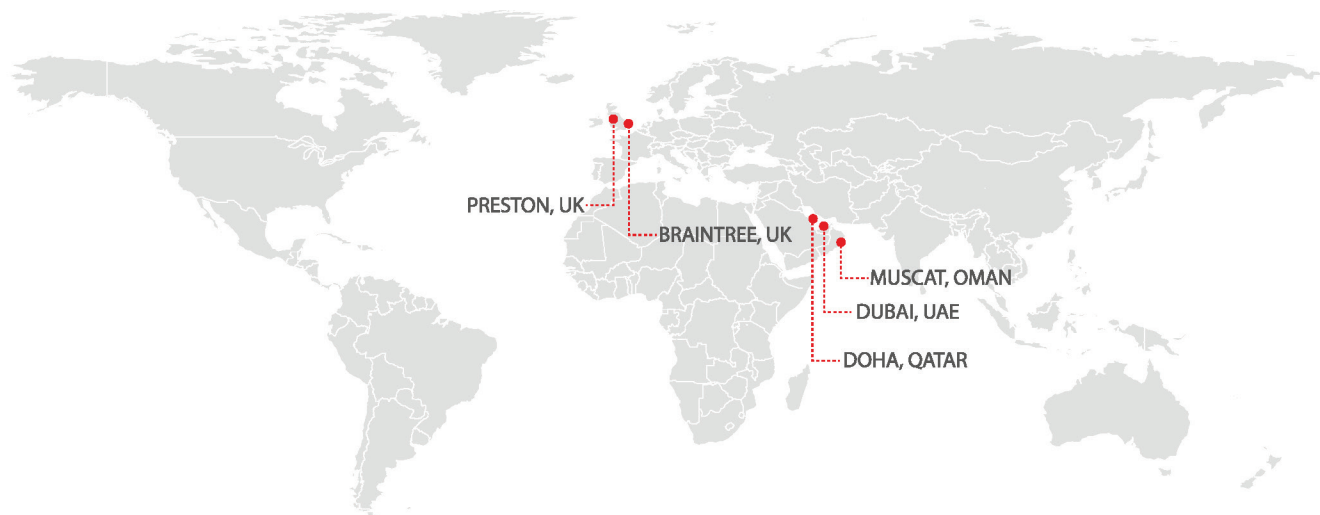
SURFACE TYPE																		
Type	BOX WITHOUT DOOR			BOX WITH DOOR					TOP			BOTTOM			SIDE(LH+RH)		THICKNESS in 'MM'	
	A	B	C	L	W	H	D	E	φ26	φ31	φ38	φ26	φ31	φ38	φ31	BOX & SIDE PLATE	Door & Tray	
4 - WAY	395	612	110	415	632	115	285	542	6	2	1	6	2	1	2+2	1	1.2	
6 - WAY	395	666	110	415	686	115	285	596	6	2	1	6	2	1	2+2	1	1.2	
8 - WAY	395	720	110	415	740	115	285	650	6	2	1	6	2	1	2+2	1	1.2	
12 - WAY	395	774	110	415	794	115	285	704	6	2	1	6	2	1	2+2	1	1.2	
16 - WAY	395	828	110	415	848	115	285	758	6	2	1	6	2	1	2+2	1	1.2	

FLUSH TYPE																		
Type	BOX WITHOUT DOOR			BOX WITH DOOR					TOP			BOTTOM			SIDE(LH+RH)		THICKNESS in 'MM'	
	A	B	C	L	W	H	D	E	φ26	φ31	φ38	φ26	φ31	φ38	φ31	BOX & SIDE PLATE	Door & Tray	
4 - WAY	395	612	110	415	632	115	285	542	6	2	1	6	2	1	2+2	1	1.2	
6 - WAY	395	666	110	415	686	115	285	596	6	2	1	6	2	1	2+2	1	1.2	
8 - WAY	395	720	110	415	740	115	285	650	6	2	1	6	2	1	2+2	1	1.2	
12 - WAY	395	774	110	415	794	115	285	704	6	2	1	6	2	1	2+2	1	1.2	
16 - WAY	395	828	110	415	848	115	285	758	6	2	1	6	2	1	2+2	1	1.2	

## Dimensions - Vertical DB Adjustable - 125A MCCB Incomer

SURFACE TYPE																	
Type	BOX WITHOUT DOOR			BOX WITH DOOR					TOP			BOTTOM			SIDE(LH+RH)	THICKNESS in 'MM'	
	A	B	C	L	W	H	D	E	φ26	φ31	φ38	φ26	φ31	φ38	φ31	BOX & SIDE PLATE	Door & Tray
4-WAY	395	612	110	395	612	115	285	542	6	2	1	6	2	1	2+2	1	1.2
6-WAY	395	666	110	395	666	115	285	596	6	2	1	6	2	1	2+2	1	1.2
8-WAY	395	720	110	395	720	115	285	650	6	2	1	6	2	1	2+2	1	1.2
12-WAY	395	774	110	395	774	115	285	704	6	2	1	6	2	1	2+2	1	1.2
16-WAY	395	828	110	395	828	115	285	758	6	2	1	6	2	1	2+2	1	1.2

FLUSH TYPE																	
Type	BOX WITHOUT DOOR			BOX WITH DOOR					TOP			BOTTOM			SIDE(LH+RH)	THICKNESS in 'MM'	
	A	B	C	L	W	H	D	E	φ26	φ31	φ38	φ26	φ31	φ38	φ31	BOX & SIDE PLATE	Door & Tray
4-WAY	395	612	110	415	632	115	285	542	6	2	1	6	2	1	2+2	1	1.2
6-WAY	395	666	110	415	686	115	285	596	6	2	1	6	2	1	2+2	1	1.2
8-WAY	395	720	110	415	740	115	285	650	6	2	1	6	2	1	2+2	1	1.2
12-WAY	395	774	110	415	794	115	285	704	6	2	1	6	2	1	2+2	1	1.2
16-WAY	395	828	110	415	848	115	285	758	6	2	1	6	2	1	2+2	1	1.2

**BRAINTREE, UK**

Dorman Smith Switchgear Limited  
8 Swinbourne Drive  
Springboard Industrial Estate  
Braintree, Essex  
CM7 2YG  
Tel: +44 (0) 844 225 1063  
Fax: +44 (0) 844 225 1064  
Email: [sales@dormansmith.co.uk](mailto:sales@dormansmith.co.uk)  
[www.dormansmithswitchgear.com](http://www.dormansmithswitchgear.com)

**DUBAI, UAE**

Dorman Smith Switchgear LLC  
P.O. Box 12872  
Dubai, UAE  
Tel: +971 4 347 0226  
Fax: +971 4 347 0002  
Email: [info@dormansmith.co.uk](mailto:info@dormansmith.co.uk)  
[www.dormansmithswitchgear.com](http://www.dormansmithswitchgear.com)

**DOHA, QATAR**

Dorman Smith Switchgear WLL  
P.O. Box 40249  
Doha, Qatar  
Tel: +974 55717161  
Fax: +974 44696183  
Email: [info@dormansmith.co.uk](mailto:info@dormansmith.co.uk)  
[www.dormansmithswitchgear.com](http://www.dormansmithswitchgear.com)

**PRESTON, UK**

Dorman Smith Switchgear Limited  
1 Nile Close  
Nelson Court Business Center  
Ashton on Ribble  
Preston, Lancashire  
PR2 2XU  
Tel: +44 (0) 1772 325380  
Fax: +44 (0) 1772 325385  
Email: [sales@dormansmith.co.uk](mailto:sales@dormansmith.co.uk)  
[www.dormansmithswitchgear.com](http://www.dormansmithswitchgear.com)

**MUSCAT, OMAN**

Dorman Smith Switchgear WLL  
P.O. Box 143, PC. 101  
Al Wattayah  
Sultanate of Oman  
Tel: +968 24562534  
+968 24562394  
Fax: +968 24562830  
Email: [info@dormansmith.co.uk](mailto:info@dormansmith.co.uk)  
[www.dormansmithswitchgear.com](http://www.dormansmithswitchgear.com)